

Technical Specifications

Smartfind & Smartfind Plus

406 Beacon Specification: Meets the requirements of international standards: COSPAS-SARSAT T.001 class 2, RTCM SC110-STD Version 2 class 2, IEC 61097-2, EN 60945, Part 80 of FCC regulations.

EPIRB temperature range: Operating -20°C to +55°C (Class 2), Storage -30°C to +70°C

SOLAS Float-Free Housing -30°C to +65°C (Class 2)

EPIRB sealing depth: Waterproof to 10 m

EPIRB Weight: 657g (1.5 lb)

Float-Free Housing & EPIRB: 2130 g (4.7 lb)

406 MHz transmitter Frequency:

406.028MHz + 1kHz

Output power: 5W + 2dB

121.5MHz homing transmitter

Frequency: 121.5MHz + 3 kHz

Output power: 50mW + 3dB PERP

GPS receiver (SMARTFIND Plus)

Maximum number of satellites tracked: 12

Transmit Antenna Type: Blade vertically polarised, omni-directional

GPS Receive Antenna Type: Ceramic dielectric patch

Type: Flashing white LED lamp

Light output: > 0.75 candela over 75% of the horizontal plane

Message formats: EPIRB National, Standard and User Location Protocol as applicable, plus EIPRB user protocols. Serialised, MMSI and radio call sign.

Controls: Manual activation, Self TEST switches

Beacon operation: Automatic activation by seawater switch within 5 seconds of immersion. Manual activation by sealed switch.

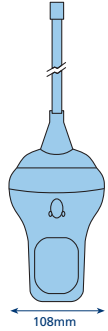
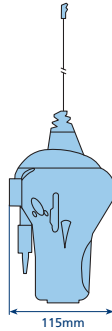
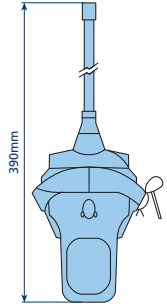
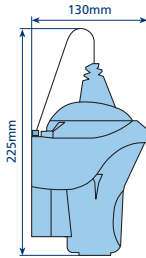
Battery Classed as non-hazardous for transportation

Temperature range: Operating -20°C to +55°C, Storage -30°C to +70°C

Operational life: 48 hours minimum at -20°C

Battery replacement interval: 5 years

Smartfind in CARRYSAFE Bracket



Auto FLOAT FREE housing for Smartfind

